

# Green Infrastructure for a Clean Mashapaug Pond

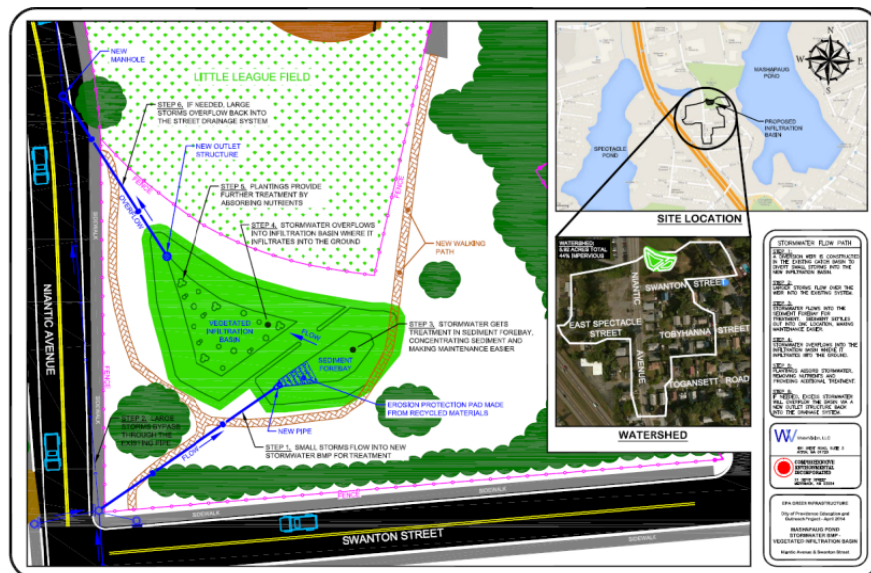
The U.S. Environmental Protection Agency is partnering with the City of Providence, the Rhode Island Department of Environmental Management and other stakeholders to construct a green infrastructure project at J.T. Owens Park near Mashapaug Pond.



This vegetated infiltration basin in the field at the corner of Swanton and Niantic Avenue will help prevent polluted stormwater run-off from the neighborhood from reaching Mashapaug Pond. The stormwater will flow to a rain garden and soak through permeable soils into the groundwater.

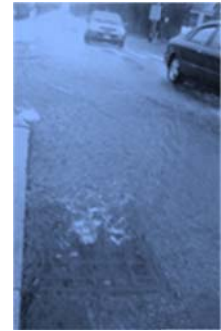
## Benefits of the J.T. Owens Park Rain Garden

- Treat approximately 2.6 million gallons of stormwater runoff per year from discharging to Mashapaug Pond.
- Annually remove 6 pounds of phosphorus which causes algae blooms.
- Prevent other pollutants to Mashapaug Pond, such as sediment and bacteria that are ordinarily transported by stormwater runoff.
- Reduce flooding and erosion around the Roger Williams Park Ponds.



## About Mashapaug

Stormwater run-off is a significant cause of pollution to Mashapaug Pond and other water bodies in Rhode Island.



Pollutants such as phosphorus from fertilizers can cause toxic algae blooms. The algae makes the water unsafe for humans or pets so the RI Department of Environmental Management closes the pond for recreational activities when a bloom occurs.



With this new rain garden, the captured rain will now soak through the soils, nourish the plants, and beautify the neighborhood instead of flowing into Mashapaug Pond untreated.



[www.ristormwatersolutions.org](http://www.ristormwatersolutions.org)  
EPA web address